

05/20/15

CONTRACT: DA00382 WBS ELEMENT: 2018CPT.01.12.2021I.1

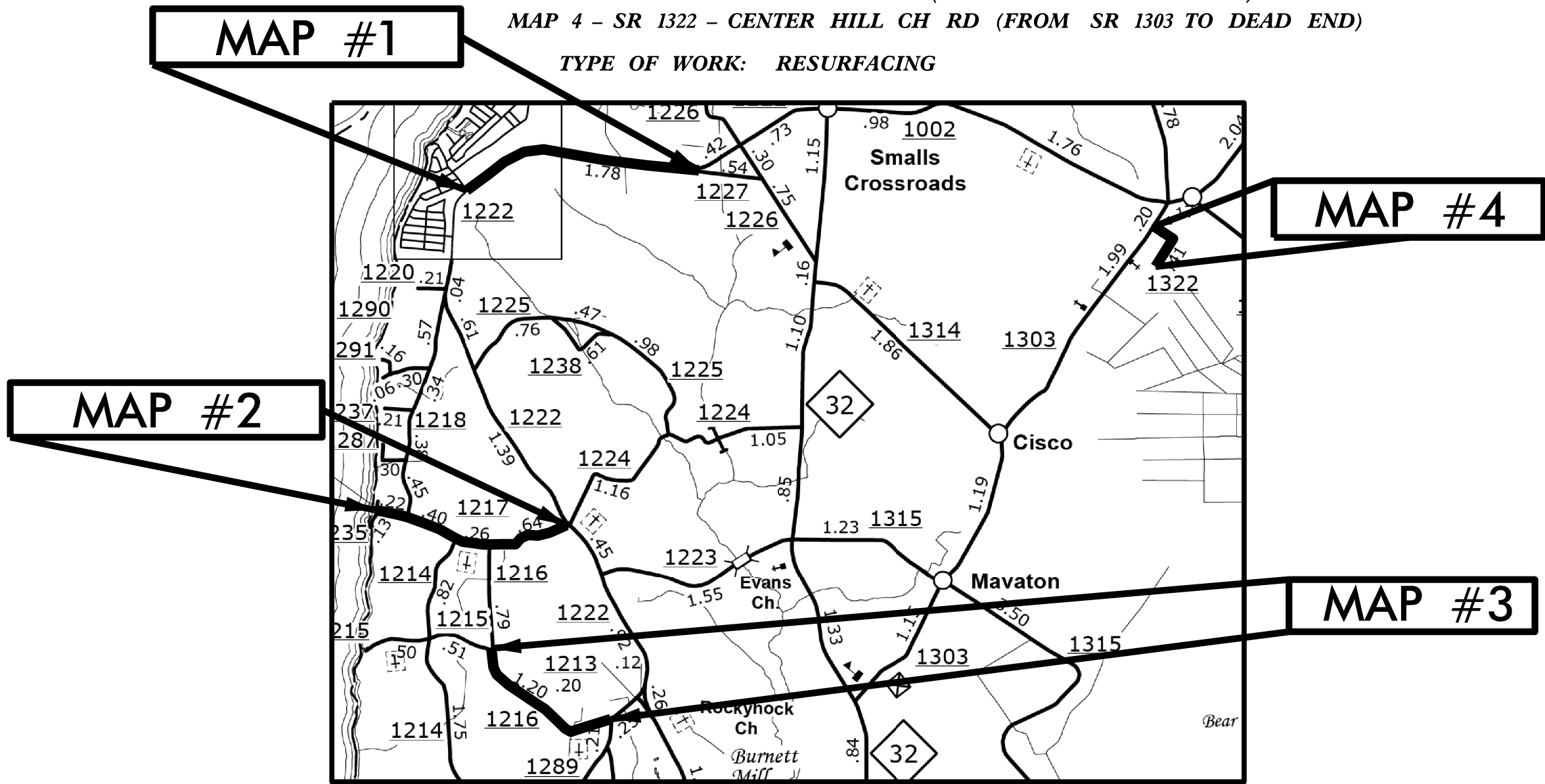
STATE OF NORTH CAROLINA  
DIVISION OF HIGHWAYS

**CHOWAN COUNTY**

STATE	STATE PROJECT REFERENCE NO.	SHEET NO.	TOTAL SHEETS
N.C.	2018CPT.01.12.2021I.1	1	
STATE PROJ. NO.	F.A. PROJ. NO.	DESCRIPTION	
2018CPT.01.12.2021I.1		MAPS 1 - 4	

- LOCATIONS: MAP 1 - SR 1222 - ROCKY HOCK RD (FROM SR 1221 TO SR 1227)  
 MAP 2 - SR 1217 - ROCKY HOCK LANDING RD (FROM SR 1222 TO DEAD END)  
 MAP 3 - SR 1216 - EVANS-BASS RD (FROM SR 1215 TO SR 1222)  
 MAP 4 - SR 1322 - CENTER HILL CH RD (FROM SR 1303 TO DEAD END)

TYPE OF WORK: RESURFACING



NOT TO SCALE

PROJECT LENGTH
LENGTH OF MAP 1 = 1.78 MI.
LENGTH OF MAP 2 = 1.60 MI.
LENGTH OF MAP 3 = 1.57 MI.
LENGTH OF MAP 4 = 0.41 MI.

Prepared in the Office of  
**DIVISION OF HIGHWAYS**  
 113 Airport Dr., Edenton NC, 27932

---

2012 STANDARD SPECIFICATIONS

LETTING DATE: \_\_\_\_\_

---

W.B. HOBBS, P.E.  
 DIVISION PROJECT MANAGER

---

C.E. SLACHTA  
 DIVISION PROPOSALS ENGINEER

DIVISION OF HIGHWAYS  
 STATE OF NORTH CAROLINA

09/08/15

CONTRACT: DA00382 WBS ELEMENT: 2018CPT.01.12.20211.1

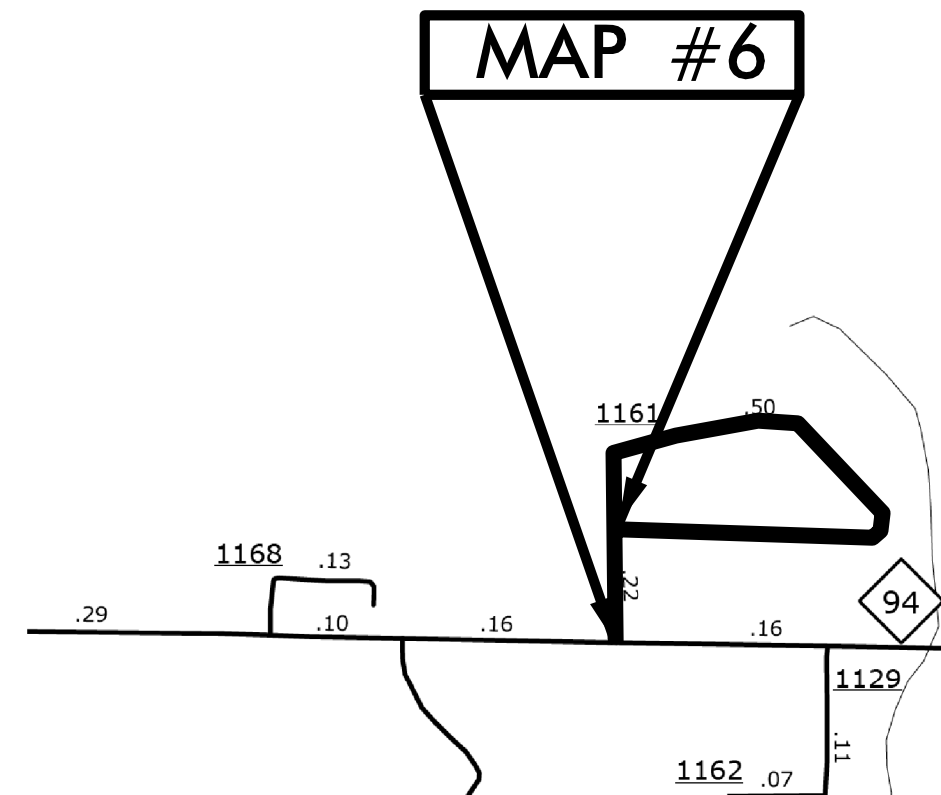
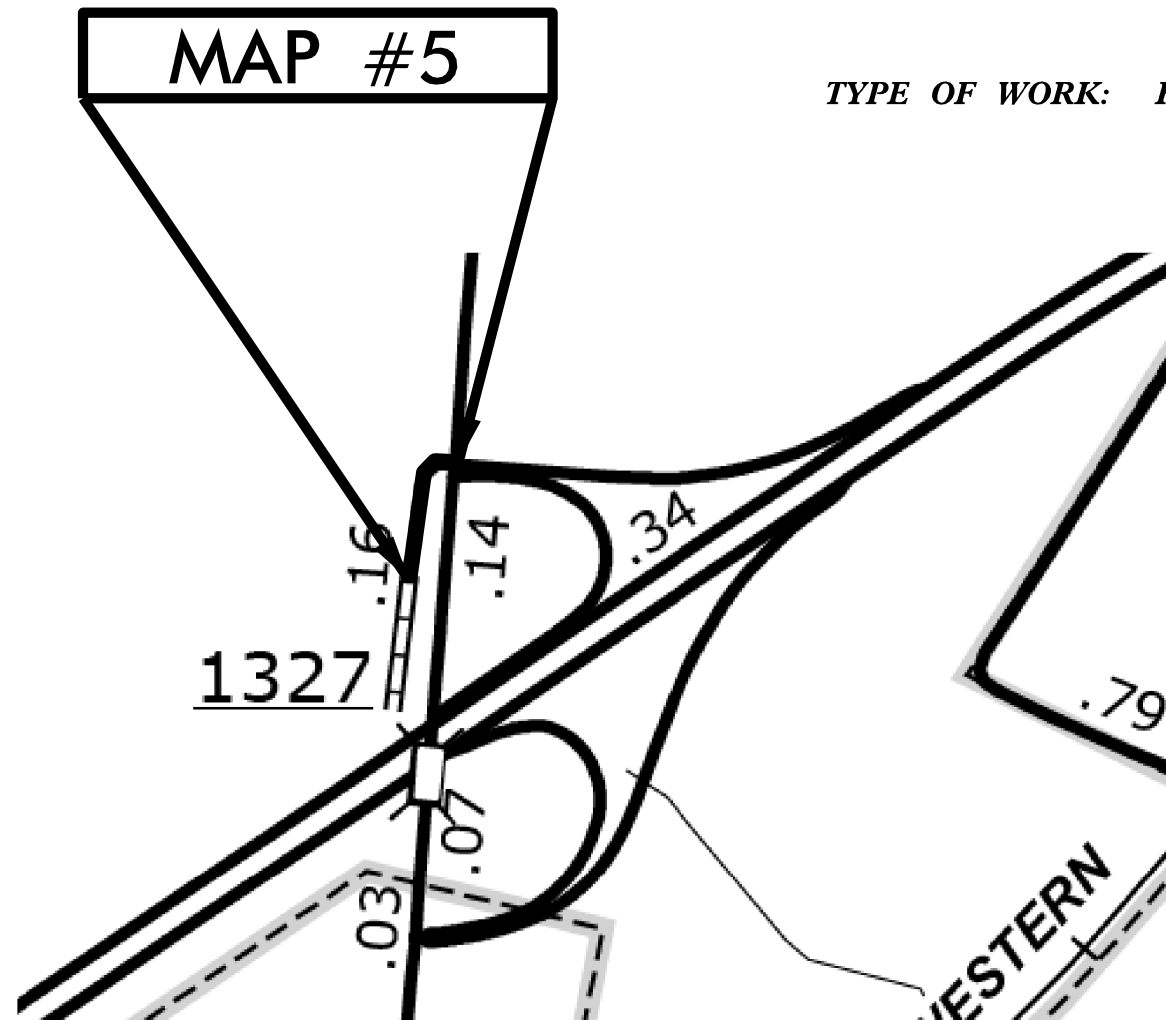
STATE OF NORTH CAROLINA  
DIVISION OF HIGHWAYS

**CHOWAN COUNTY**

STATE	STATE PROJECT REFERENCE NO.	SHEET NO.	TOTAL SHEETS
N.C.	2018CPT.01.12.20211.1	2	
STATE PROJ. NO.	F.A. PROJ. NO.	DESCRIPTION	
2018CPT.01.12.20211.1		MAPS 5 - 6	

LOCATIONS: MAP 5 - SR 1327 - PARADISE SPUR RD (FROM SR 1319 TO END OF PAV.)  
MAP 6 - SR 1161 - WINDSOR LN (FROM NC 94 TO SR 1161)

TYPE OF WORK: RESURFACING



NOT TO SCALE

PROJECT LENGTH

LENGTH OF MAP 5 = 0.12 MI.

LENGTH OF MAP 6 = 0.57 MI.

Prepared in the Office of:  
**DIVISION OF HIGHWAYS**  
113 Airport Dr., Edenton NC, 27932

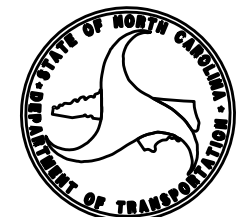
2012 STANDARD SPECIFICATIONS

LETTING DATE:

W.B. HOBBS, P.E.  
DIVISION PROJECT MANAGER

C.E. SLACHTA  
DIVISION PROPOSALS ENGINEER

DIVISION OF HIGHWAYS  
STATE OF NORTH CAROLINA



05/08/2018

**CONTRACT: DA00382 WBS ELEMENT: 2018CPT.01.12.20211.1**

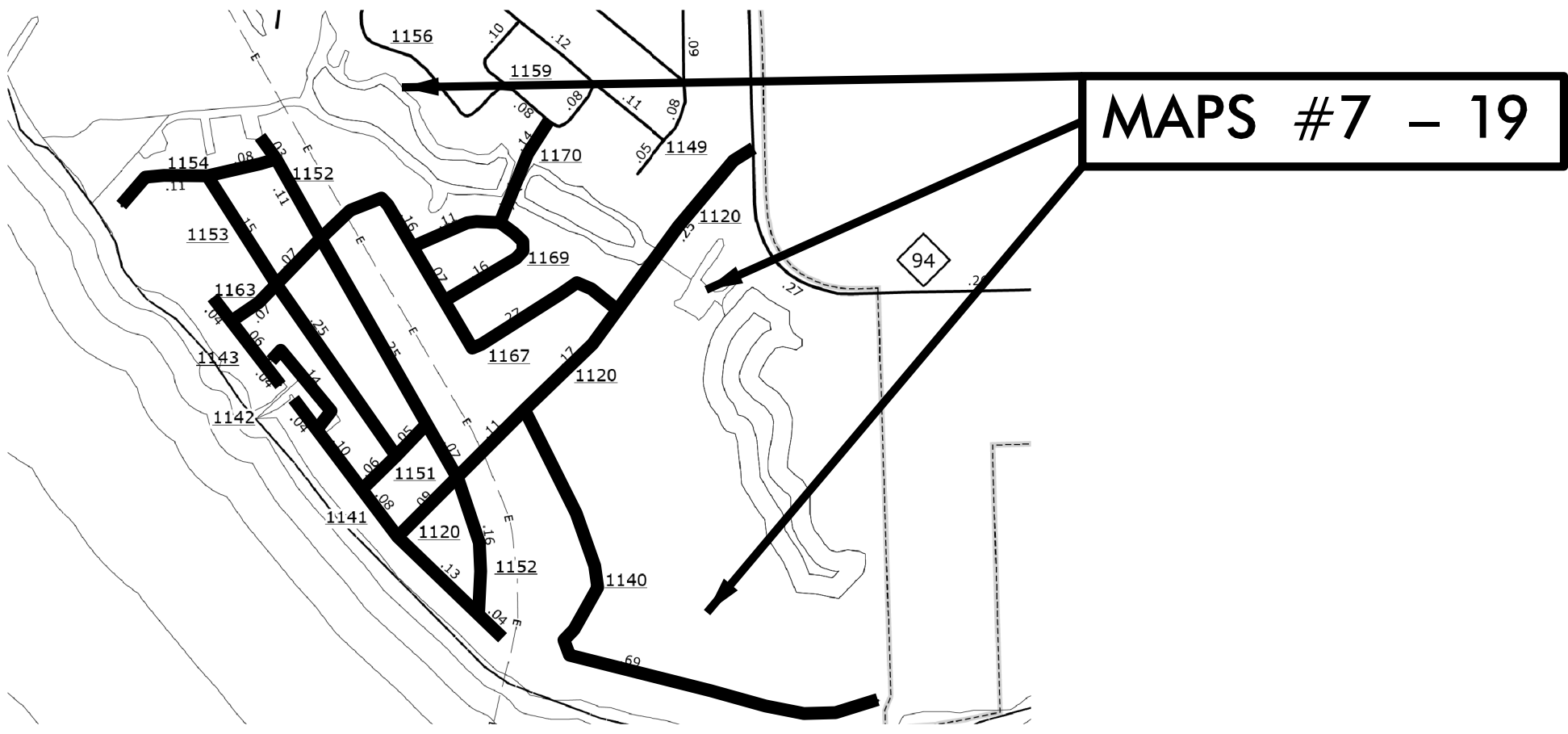
STATE OF NORTH CAROLINA  
DIVISION OF HIGHWAYS

**CHOWAN COUNTY**

STATE	STATE PROJECT REFERENCE NO.	SHEET NO.	TOTAL SHEETS
N.C.	2018CPT.01.12.20211.1	3	
STATE PROJ. NO.	F.A. PROJ. NO.	DESCRIPTION	
2018CPT.01.12.20211.1		MAPS 7 - 19	

**LOCATIONS:** MAP 7 - SR 1141 - SURFSIDE DR (FROM DEAD END TO CUL-DE-SAC), MAP 8 - SR 1142 - SURFSIDE DR (FROM SR 1143 TO SR 1141)  
 MAP 9 - SR 1143 - SURFSIDE DR (FROM DEAD END TO DEAD END), MAP 10 - SR 1151 - BEACHVIEW DR (FROM SR 1141 TO SR 1152)  
 MAP 11 - SR 1152 - CORAL LN (FROM SR 1141 TO DEAD END), MAP 12 - SR 1153 - SEAVIEW DR (FROM SR 1151 TO SR 1154)  
 MAP 13 - SR 1154 - BLACKBEARDS RD (FROM SR 1152 TO END MAINT.), MAP 14 - SR 1163 - ALBEMARLE DR (FROM SR 1143 TO SR 1167)  
 MAP 15 - SR 1167 - ROCKFISH STREET (FROM SR 1163 TO SR 1120), MAP 16 - SR 1169 - BLU GILL CIRCLE (FROM SR 1167 TO SR 1167)  
 MAP 17 - SR 1170 - CANAL DRIVE (FROM SR 1169 TO SR 1159), MAP 18 - SR 1120 - MONTPELIER DR (FROM NC 94 TO SR 1141)  
 MAP 19 - SR 1140 - HORNIBLOW PT DR-BELLA VISTA DR (FROM SR 1120 TO DEAD END)

**TYPE OF WORK: RESURFACING**



NOT TO SCALE

PROJECT LENGTH	
LENGTH OF MAP 7 =	0.39 MI.
LENGTH OF MAP 8 =	0.14 MI.
LENGTH OF MAP 9 =	0.13 MI.
LENGTH OF MAP 10 =	0.11 MI.
LENGTH OF MAP 11 =	0.62 MI.
LENGTH OF MAP 12 =	0.40 MI.
LENGTH OF MAP 13 =	0.13 MI.

PROJECT LENGTH	
LENGTH OF MAP 14 =	0.23 MI.
LENGTH OF MAP 15 =	0.41 MI.
LENGTH OF MAP 16 =	0.27 MI.
LENGTH OF MAP 17 =	0.14 MI.
LENGTH OF MAP 18 =	0.59 MI.
LENGTH OF MAP 19 =	0.69 MI.

Prepared in the Office of:  
**DIVISION OF HIGHWAYS**  
 113 Airport Dr., Edenton NC, 27932

---

2012 STANDARD SPECIFICATIONS

LETTING DATE: \_\_\_\_\_

---

W.B. HOBBS, P.E.  
 DIVISION PROJECT MANAGER

---

C.E. SLACHTA  
 DIVISION PROPOSALS ENGINEER

DIVISION OF HIGHWAYS  
 STATE OF NORTH CAROLINA

09/08/12/15

CONTRACT: DA00382 WBS ELEMENT: 2018CPT.01.12.20212.1

STATE OF NORTH CAROLINA  
DIVISION OF HIGHWAYS

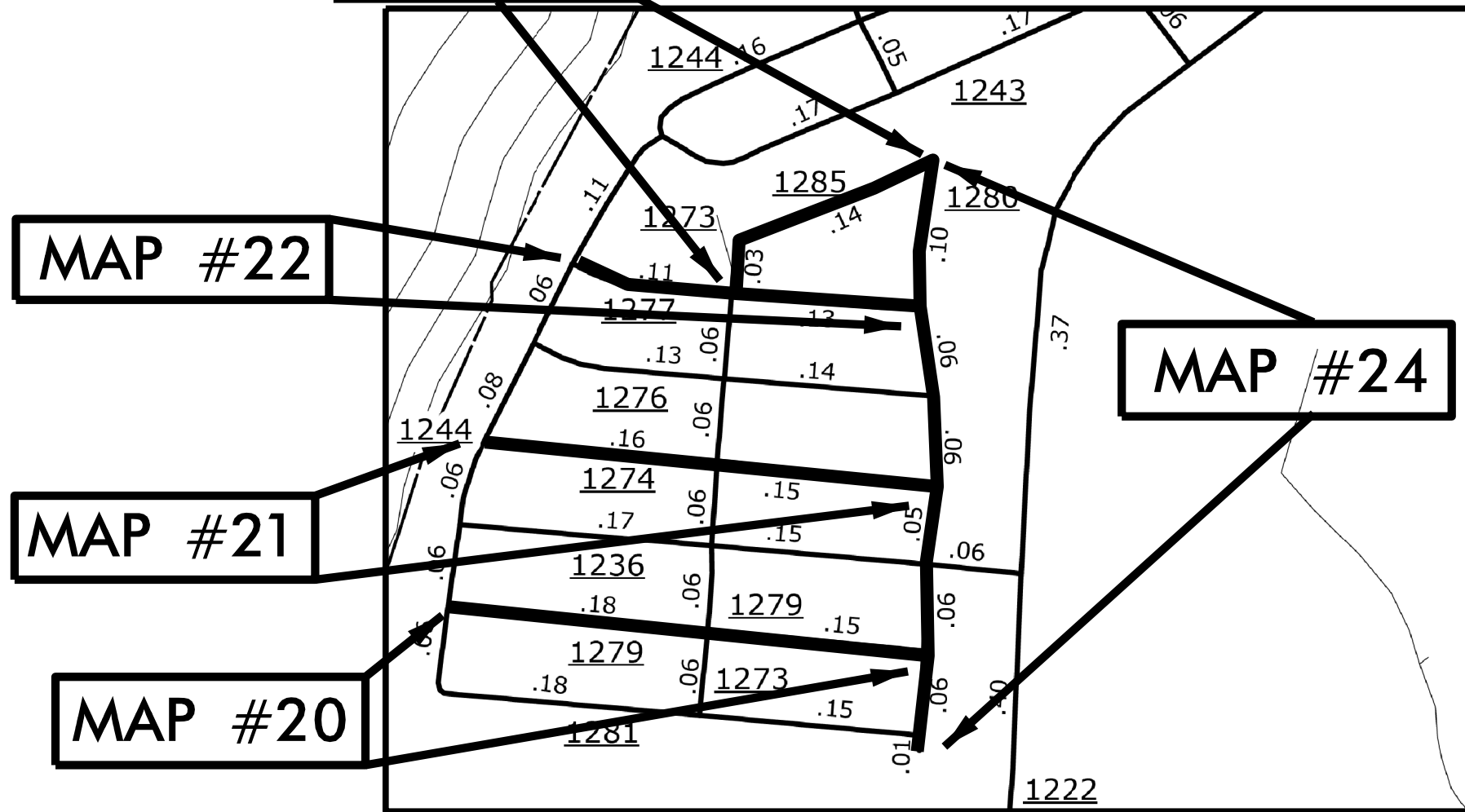
**CHOWAN COUNTY**

STATE	STATE PROJECT REFERENCE NO.	SHEET NO.	TOTAL SHEETS
N.C.	2018CPT.01.12.20212.1	4	
STATE PROJ. NO.	F.A. PROJ. NO.	DESCRIPTION	
2018CPT.01.12.20212.1		MAPS 20 - 24	

- LOCATIONS:**
- MAP 20 - SR 1279 - PAMILCO TRAIL (FROM SR 1244 TO SR 1280)
  - MAP 21 - SR 1274 - YEOPIM TRAIL (FROM SR 1244 TO SR 1280)
  - MAP 22 - SR 1277 - COREE TRAIL (FROM SR 1244 TO SR 1280)
  - MAP 23 - SR 1285 - CHEPANOE TRAIL (FROM SR 1277 TO SR 1280)
  - MAP 24 - SR 1280 - PASQUENOKE TRIL (FROM SR 1285 TO DEAD END)

**MAP #23**

TYPE OF WORK: THIN LIFT RESURFACING



NOT TO SCALE

PROJECT LENGTH

- LENGTH OF MAP 20 = 0.33 MI.
- LENGTH OF MAP 21 = 0.31 MI.
- LENGTH OF MAP 22 = 0.24 MI.
- LENGTH OF MAP 23 = 0.17 MI.
- LENGTH OF MAP 24 = 0.40 MI.

Prepared in the Office of:  
**DIVISION OF HIGHWAYS**

113 Airport Dr., Edenton NC, 27932

2012 STANDARD SPECIFICATIONS

LETTING DATE:

W.B. HOBBS, P.E.  
DIVISION PROJECT MANAGER

C.E. SLACHTA  
DIVISION PROPOSALS ENGINEER

DIVISION OF HIGHWAYS  
STATE OF NORTH CAROLINA



09/20/09

CONTRACT: DA00382 WBS ELEMENT: 2018CPT.01.12.20212.1

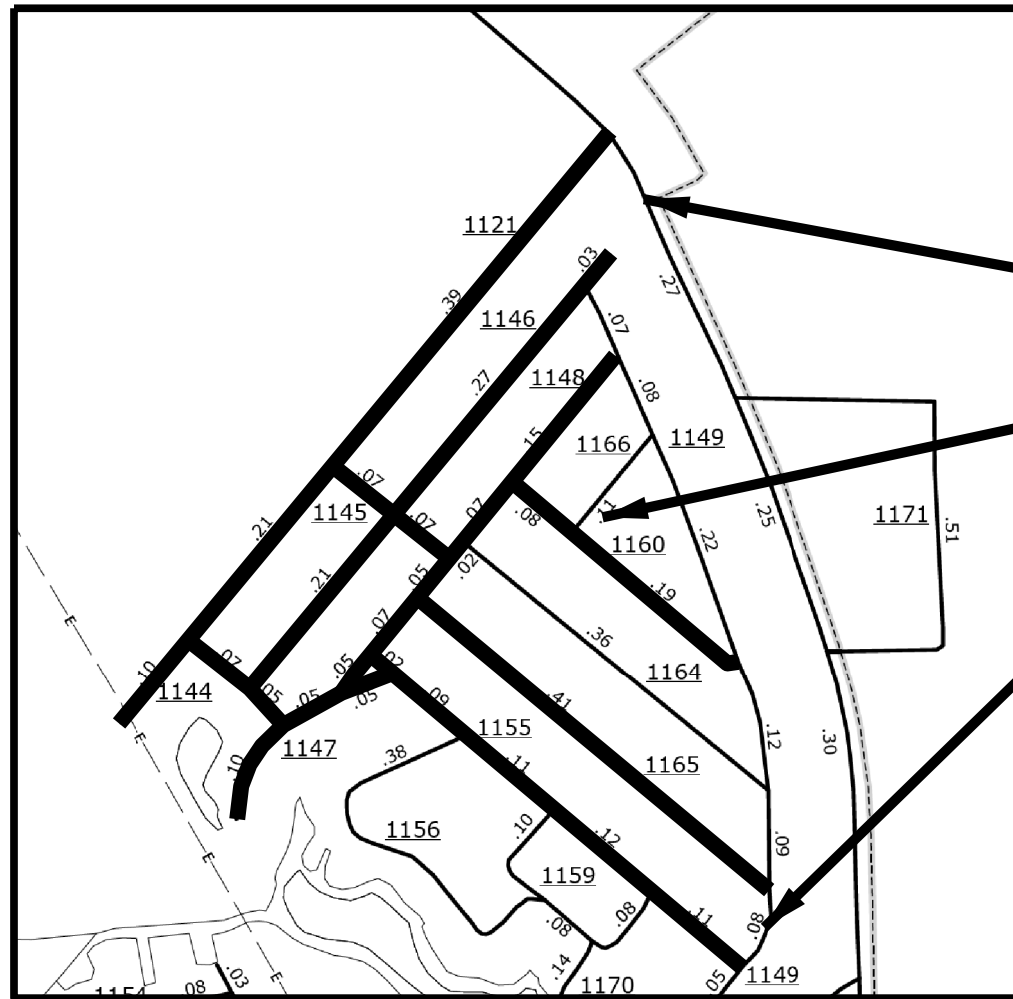
STATE OF NORTH CAROLINA  
DIVISION OF HIGHWAYS

**CHOWAN COUNTY**

STATE	STATE PROJECT REFERENCE NO.	SHEET NO.	TOTAL SHEETS
N.C.	2018CPT.01.12.20212.1	5	
STATE PROJ. NO.	F.A. PROJ. NO.	DESCRIPTION	
2018CPT.01.12.20212.1		MAPS 25 - 33	

**LOCATIONS:** MAP 25 – SR 1121 – COLONY DR (FROM NC 94 TO DEAD END), MAP 26 – SR 1144 – ASHE ST (FROM SR 1121 TO SR 1147)  
 MAP 27 – SR 1145 – MAPLE ST (FROM SR 1121 TO SR 1148), MAP 28 – SR 1146 – WILLOW DR (FROM SR 1144 TO CUL-DE-SAC)  
 MAP 29 – SR 1147 – DOGWOOD DR (FROM SR 1155 TO DEAD END), MAP 30 – SR 1148 – MAGNOLIA DR (FROM SR 1147 TO SR 1149)  
 MAP 31 – SR 1155 – UNIPER DR (FROM SR 1148 TO SR 1149), MAP 32 – SR 1165 – CYPRESS DR (FROM SR1148 TO SR 1149)  
 MAP 33 – SR 1160 – PINEVIEW DR (FROM SR 1148 TO ST 1149)

**TYPE OF WORK:** THIN LIFT RESURFACING



**MAPS #25 – 33**

NOT TO SCALE

PROJECT LENGTH	
LENGTH OF MAP 25 =	0.70 MI.
LENGTH OF MAP 26 =	0.12 MI.
LENGTH OF MAP 27 =	0.14 MI.
LENGTH OF MAP 28 =	0.52 MI.
LENGTH OF MAP 29 =	0.20 MI.

PROJECT LENGTH	
LENGTH OF MAP 30 =	0.41 MI.
LENGTH OF MAP 31 =	0.45 MI.
LENGTH OF MAP 32 =	0.41 MI.
LENGTH OF MAP 33 =	0.27 MI.

Prepared in the Office of:  
**DIVISION OF HIGHWAYS**  
 113 Airport Dr., Edenton NC, 27932

2012 STANDARD SPECIFICATIONS

LETTING DATE: \_\_\_\_\_

W.B. HOBBS, P.E.  
 DIVISION PROJECT MANAGER

C.E. SLACHTA  
 DIVISION PROPOSALS ENGINEER

DIVISION OF HIGHWAYS  
 STATE OF NORTH CAROLINA

05/08/09

CONTRACT: DA00382 WBS ELEMENT: 2018CPT.01.12.20581.1

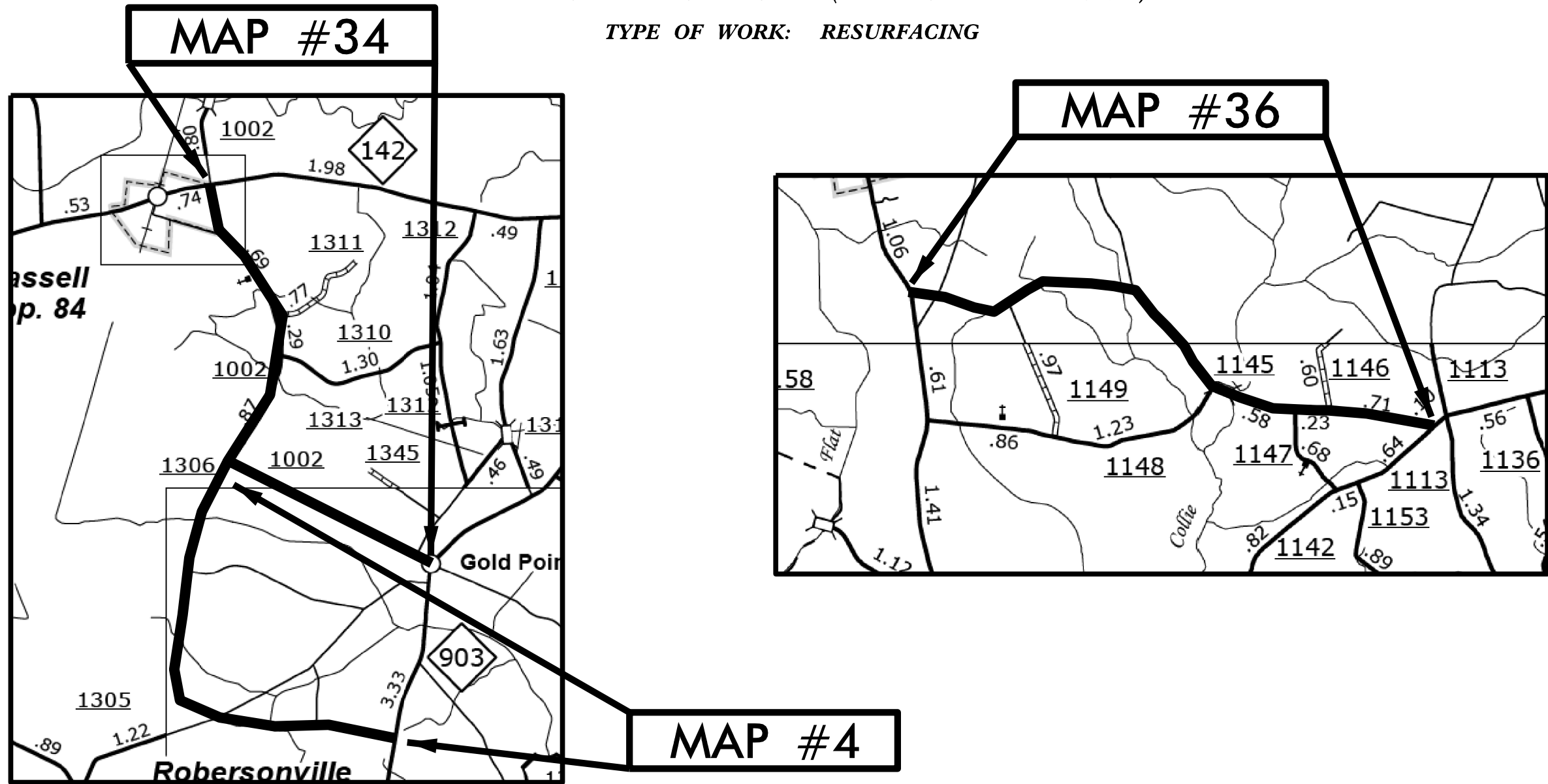
STATE OF NORTH CAROLINA  
DIVISION OF HIGHWAYS

**MARTIN COUNTY**

STATE	STATE PROJECT REFERENCE NO.	SHEET NO.	TOTAL SHEETS
N.C.	2018CPT.01.12.20581.1	6	
STATE PROGRAM	F.A. PROGRAM	DESCRIPTION	
2018CPT.01.12.20581.1		MAPS 34 - 36	

LOCATIONS: MAP 34 - SR 1002 - HASSELL RD (FROM NC 903 TO NC 142)  
 MAP 35 - SR 1145 - SAM EVERETT RD (FROM SR 1142 TO NC 903)  
 MAP 36 - SR 1306 - GRIMES RD (FROM SR 1002 TO NC 903)

TYPE OF WORK: RESURFACING



NOT TO SCALE

PROJECT LENGTH

LENGTH OF MAP 34 = 3.91 MI.  
 LENGTH OF MAP 35 = 3.81 MI.  
 LENGTH OF MAP 36 = 3.45 MI.

Prepared In the Office of:  
**DIVISION OF HIGHWAYS**  
 113 Airport Dr., Edenton NC, 27932

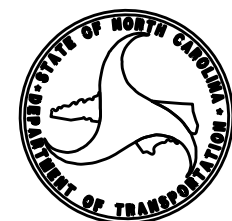
2012 STANDARD SPECIFICATIONS

LETTING DATE:

W.B. HOBBS, P.E.  
 DIVISION PROJECT MANAGER

C.E. SLACHTA  
 DIVISION PROPOSALS ENGINEER

DIVISION OF HIGHWAYS  
 STATE OF NORTH CAROLINA



09/08/99

CONTRACT: DA00382 WBS ELEMENT: 2018CPT.01.12.20582.1

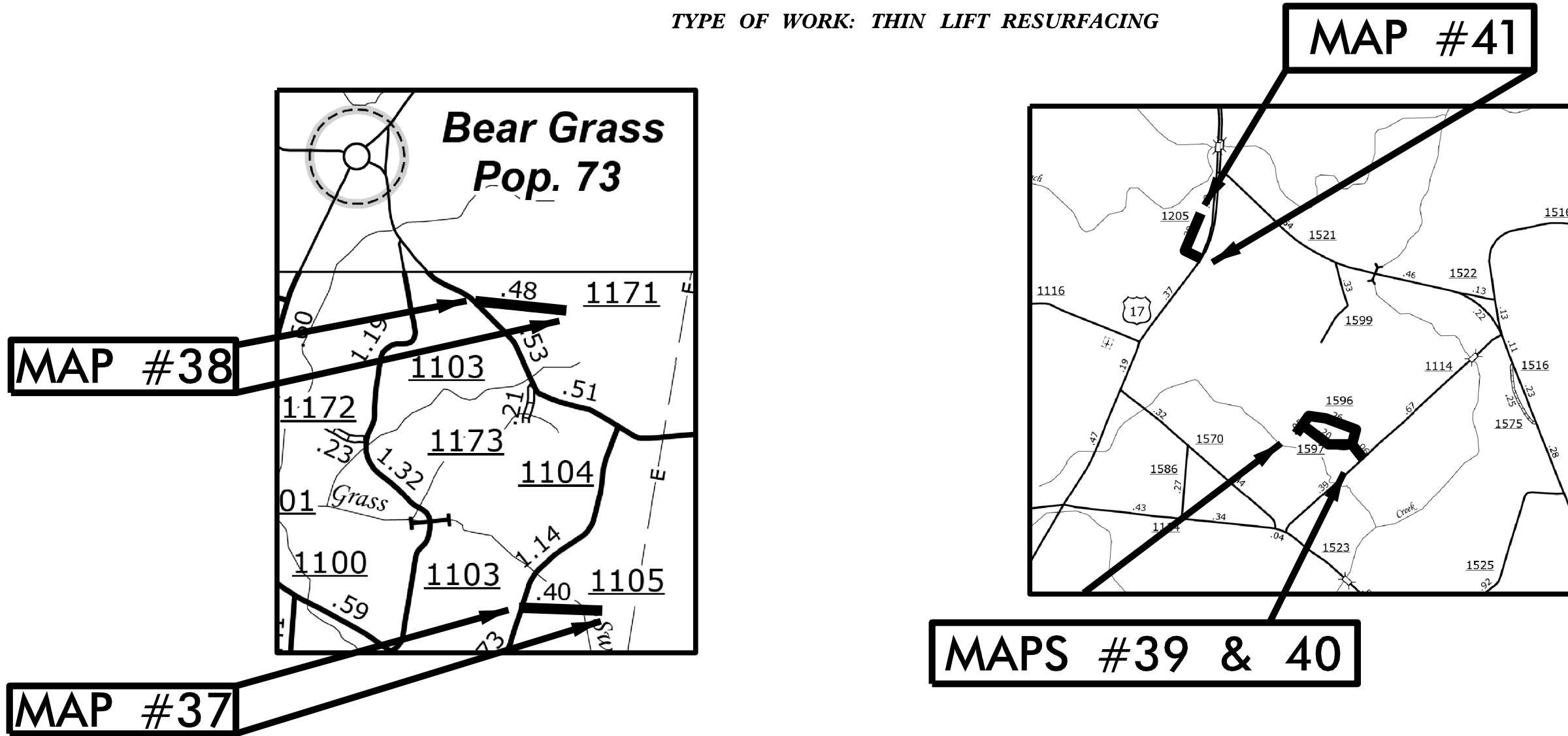
STATE OF NORTH CAROLINA  
DIVISION OF HIGHWAYS

**MARTIN COUNTY**

STATE	STATE PROJECT REFERENCE NO.	SHEET NO.	TOTAL SHEETS
N.C.	2018CPT.01.12.20582.1	7	
STATE PROJ. NO.	F.A. PROJ. NO.	DESCRIPTION	
2018CPT.01.12.20582.1		MAPS 37 - 41	

- LOCATIONS: MAP 37 - SR 1105 - FROM SR 1104 TO DEAD END  
 MAP 38 - SR 1171 - FROM SR 1106 TO DEAD END  
 MAP 39 - SR 1596 - FROM SR 1114 TO CUL-DE-SAC  
 MAP 40 - SR 1597 - FROM SR 1596 TO SR 1596  
 MAP 41 - SR 1205 - FROM US 17 TO END STATE MAIN.

TYPE OF WORK: THIN LIFT RESURFACING



NOT TO SCALE

PROJECT LENGTH

LENGTH OF MAP 37 =	0.40 MI.
LENGTH OF MAP 38 =	0.48 MI.
LENGTH OF MAP 39 =	0.37 MI.
LENGTH OF MAP 40 =	0.20 MI.
LENGTH OF MAP 41 =	0.20 MI.

Prepared in the Office of:  
**DIVISION OF HIGHWAYS**  
 113 Airport Dr., Edenton NC, 27932

---

2012 STANDARD SPECIFICATIONS

LETTING DATE: \_\_\_\_\_

---

W.B. HOBBS, P.E.  
 DIVISION PROJECT MANAGER

---

C.E. SLACHTA  
 DIVISION PROPOSALS ENGINEER

DIVISION OF HIGHWAYS  
 STATE OF NORTH CAROLINA

09/28/15

CONTRACT: DA00382 WBS ELEMENT: 2018CPT.01.12.20582.1

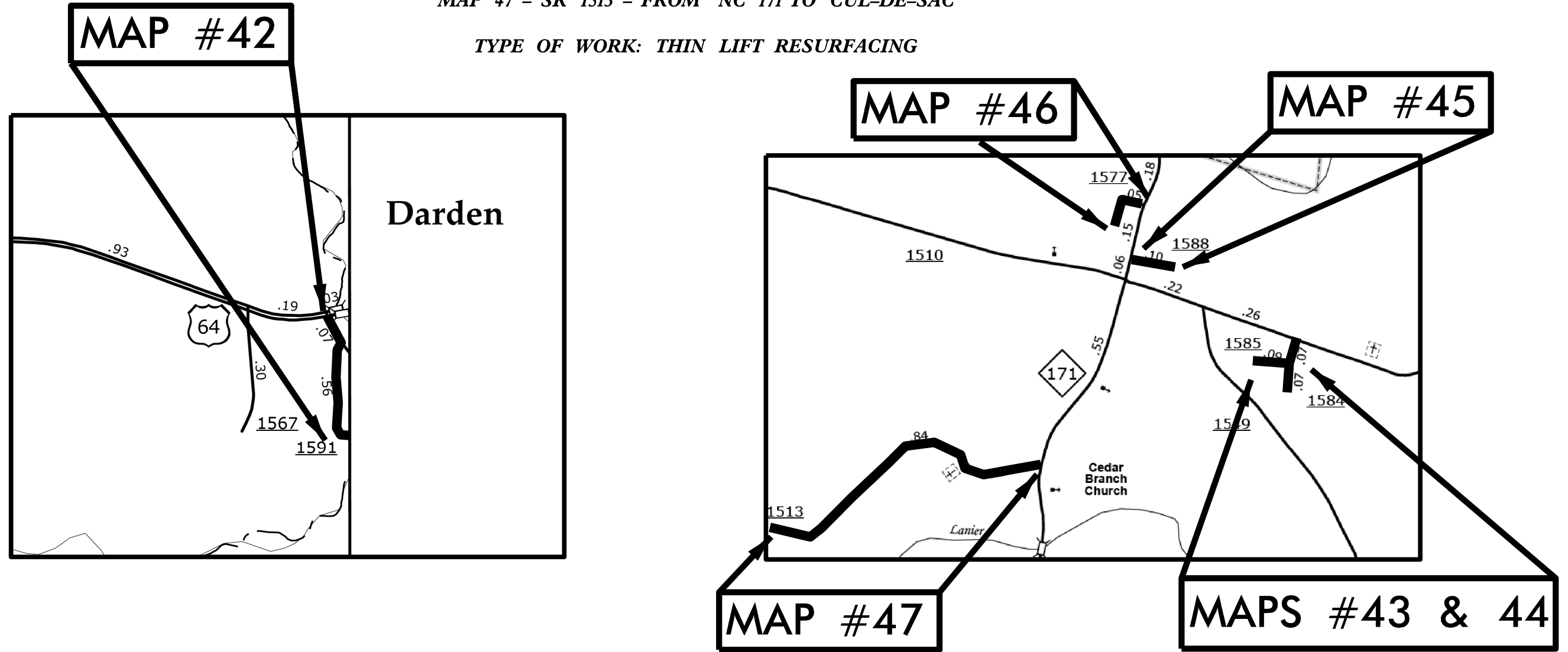
STATE OF NORTH CAROLINA  
DIVISION OF HIGHWAYS

**MARTIN COUNTY**

STATE	STATE PROJECT REFERENCE NO.	SHEET NO.	TOTAL SHEETS
N.C.	2018CPT.01.12.20582.1	8	
STATE PROJECT	F.A. PROJECT	DESCRIPTION	
2018CPT.01.12.20582.1		MAPS 42 - 47	

- LOCATIONS:**
- MAP 42 - SR 1591 - FROM US 64 TO SR 1591
  - MAP 43 - SR 1584 - FROM SR 1510 TO DEAD END
  - MAP 44 - SR 1585 - FROM SR 1584 TO DEAD END
  - MAP 45 - SR 1588 - FROM NC 171 TO DEAD END
  - MAP 46 - SR 1577 - FROM NC 171 TO DEAD END
  - MAP 47 - SR 1513 - FROM NC 171 TO CUL-DE-SAC

TYPE OF WORK: THIN LIFT RESURFACING



NOT TO SCALE

PROJECT LENGTH

- LENGTH OF MAP 42 = 0.64 MI.
- LENGTH OF MAP 43 = 0.14 MI.
- LENGTH OF MAP 44 = 0.09 MI.
- LENGTH OF MAP 45 = 0.10 MI.
- LENGTH OF MAP 46 = 0.09 MI.
- LENGTH OF MAP 47 = 0.84 MI.

Prepared in the Office of:  
**DIVISION OF HIGHWAYS**  
113 Airport Dr., Edenton NC, 27932

---

2012 STANDARD SPECIFICATIONS

---

LETTING DATE: \_\_\_\_\_

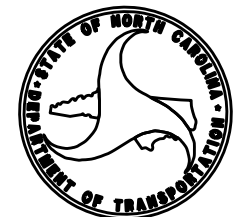
---

W.B. HOBBS, P.E.  
DIVISION PROJECT MANAGER

---

C.E. SLACHTA  
DIVISION PROPOSALS ENGINEER

DIVISION OF HIGHWAYS  
STATE OF NORTH CAROLINA





09/08/99

CONTRACT: DA00382 WBS ELEMENT: 2018CPT.01.12.20582.1

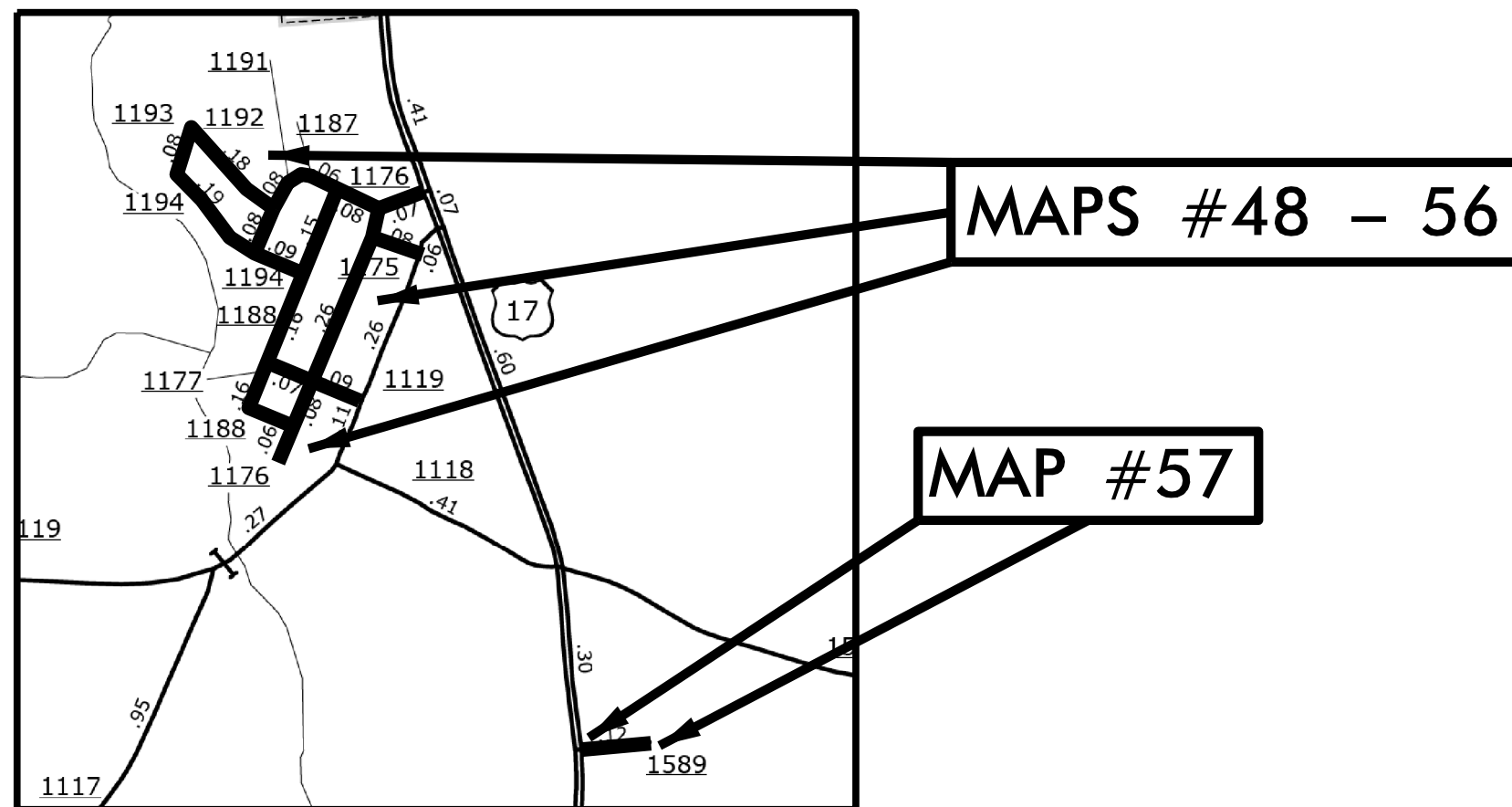
STATE OF NORTH CAROLINA  
DIVISION OF HIGHWAYS

**MARTIN COUNTY**

STATE	STATE PROJECT REFERENCE NO.	SHEET NO.	TOTAL SHEETS
N.C.	2018CPT.01.12.20582.1	9	
STATE PROJ. NO.	F.A. PROJ. NO.	DESCRIPTION	
2018CPT.01.12.20582.1		MAPS 48 - 57	

**LOCATIONS:** MAP 48 - SR 1175 - FROM SR 1119 TO SR 1176, MAP 49 - SR 1176 - FROM US 17 TO DEAD END  
 MAP 50 - SR 1177 - FROM SR 1119 TO SR 1188, MAP 51 - SR 1187 - FROM SR 1176 TO SR 1191  
 MAP 52 - SR 1188 - FROM SR 1187 TO SR 1176, MAP 53 - SR 1191 - FROM SR 1194 TO SR 1187  
 MAP 54 - SR 1192 - FROM SR 1191 TO SR 1193, MAP 55 - SR 1193 - FROM SR 1192 TO SR 1194  
 MAP 56 - SR 1194 - FROM SR 1188 TO SR 1193, MAP 57 - SR 1589 - FROM US 17 TO DEAD END

**TYPE OF WORK:** THIN LIFT RESURFACING



NOT TO SCALE

**PROJECT LENGTH**

LENGTH OF MAP 48 = 0.08 MI.  
 LENGTH OF MAP 49 = 0.53 MI.  
 LENGTH OF MAP 50 = 0.17 MI.  
 LENGTH OF MAP 51 = 0.14 MI.  
 LENGTH OF MAP 52 = 0.47 MI.

**PROJECT LENGTH**

LENGTH OF MAP 53 = 0.16 MI.  
 LENGTH OF MAP 54 = 0.18 MI.  
 LENGTH OF MAP 55 = 0.08 MI.  
 LENGTH OF MAP 56 = 0.28 MI.  
 LENGTH OF MAP 57 = 0.10 MI.

Prepared in the Office of:  
**DIVISION OF HIGHWAYS**

113 Airport Dr., Edenton NC, 27932

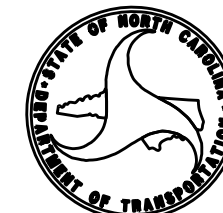
2012 STANDARD SPECIFICATIONS

LETTING DATE:

W.B. HOBBS, P.E.  
 DIVISION PROJECT MANAGER

C.E. SLACHTA  
 DIVISION PROPOSALS ENGINEER

DIVISION OF HIGHWAYS  
 STATE OF NORTH CAROLINA



09/28/15

CONTRACT: DA00382 WBS ELEMENT: 2018CPT.01.12.20582.1

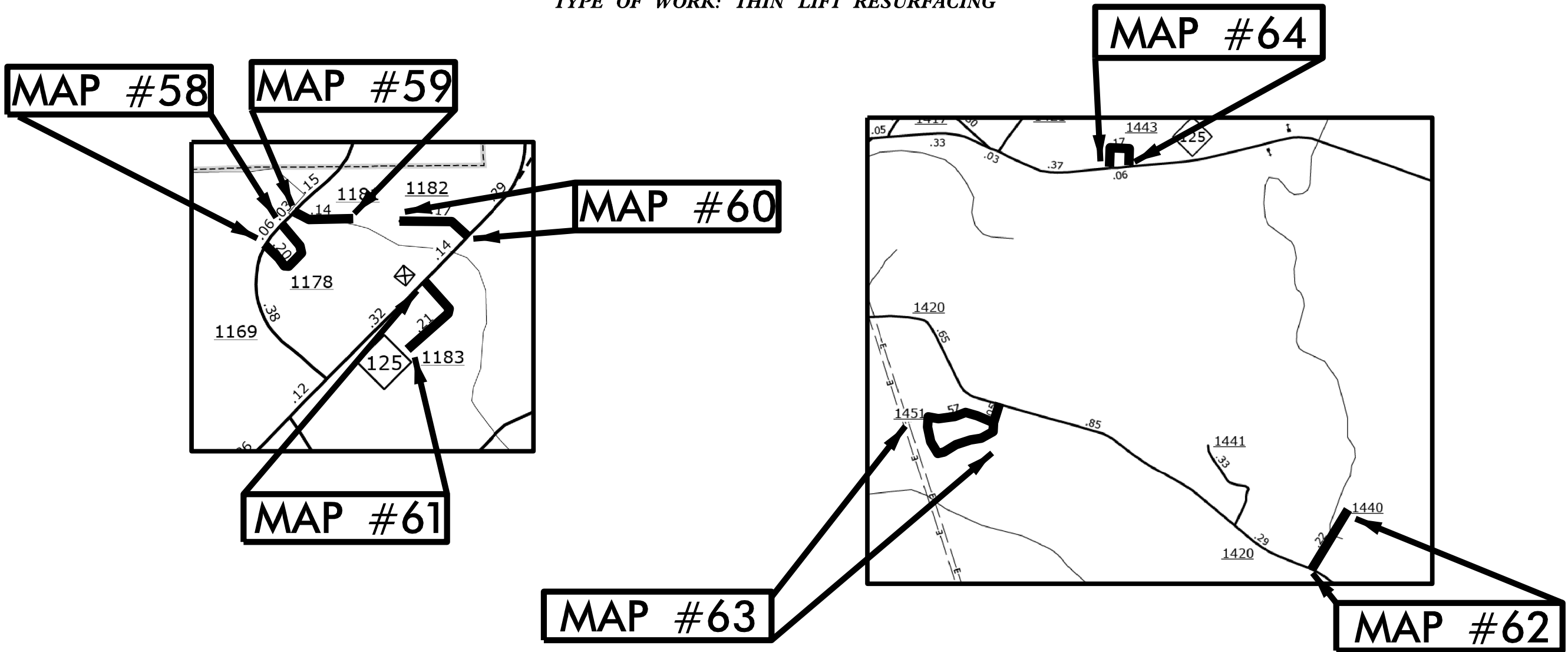
STATE OF NORTH CAROLINA  
DIVISION OF HIGHWAYS

**MARTIN COUNTY**

STATE	STATE PROJECT REFERENCE NO.	SHEET NO.	TOTAL SHEETS
N.C.	2018CPT.01.12.20582.1	10	
STATE PROJ. NO.	F.A. PROJ. NO.	DESCRIPTION	
2018CPT.01.12.20582.1		MAPS 58 - 64	

LOCATIONS: MAP 58 - SR 1178 - FROM SR 1169 TO SR 1169, MAP 59 - SR 1181 - FROM SR 1169 TO PARKING LOT  
 MAP 60 - SR 1182 - FROM NC 125 TO PARKING LOT, MAP 61 - SR 1183 - FROM NC 125 TO DEAD END  
 MAP 62 - SR 1440 - FROM SR 1420 TO DEAD END, MAP 63 - SR 1451 - FROM SR 1420 TO SR 1451  
 MAP 64 - SR 1443 - FROM NC 125 TO NC 125

TYPE OF WORK: THIN LIFT RESURFACING



NOT TO SCALE

PROJECT LENGTH

LENGTH OF MAP 58 =	0.18 MI.
LENGTH OF MAP 59 =	0.10 MI.
LENGTH OF MAP 60 =	0.08 MI.
LENGTH OF MAP 61 =	0.22 MI.
LENGTH OF MAP 62 =	0.22 MI.
LENGTH OF MAP 63 =	0.61 MI.
LENGTH OF MAP 64 =	0.17 MI.

Prepared in the Office of:  
**DIVISION OF HIGHWAYS**  
 113 Airport Dr., Edenton NC, 27932

---

2012 STANDARD SPECIFICATIONS

LETTING DATE: \_\_\_\_\_

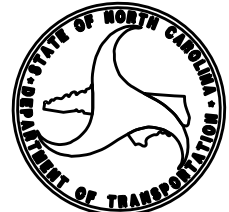
---

W.B. HOBBS, P.E.  
 DIVISION PROJECT MANAGER

---

C.E. SLACHTA  
 DIVISION PROPOSALS ENGINEER

DIVISION OF HIGHWAYS  
STATE OF NORTH CAROLINA



09/08/99

CONTRACT: DA00382 WBS ELEMENT: 2018CPT.01.12.20582.1

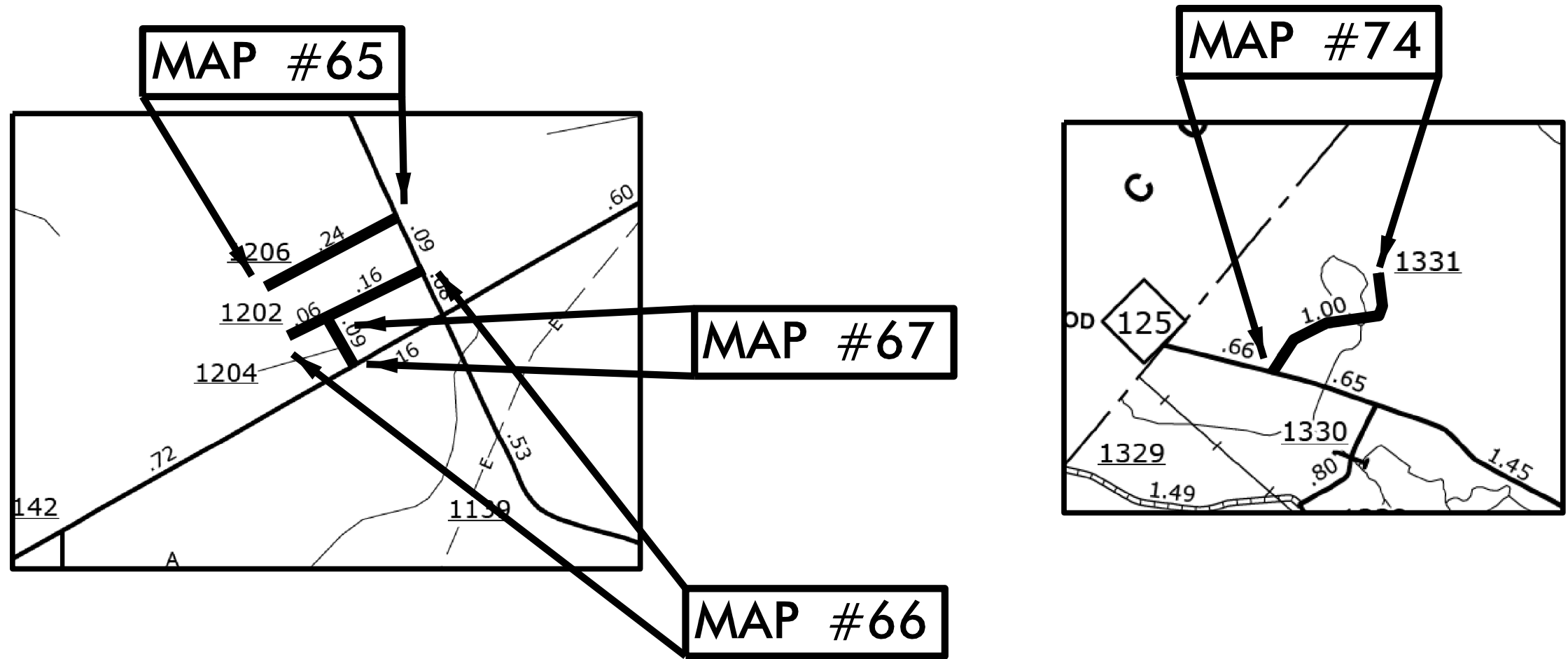
STATE OF NORTH CAROLINA  
DIVISION OF HIGHWAYS

**MARTIN COUNTY**

STATE	STATE PROJECT REFERENCE NO.	SHEET NO.	TOTAL SHEETS
N.C.	2018CPT.01.12.20582.1	11	
STATE PROJ. NO.	F.A. PROJ. NO.	DESCRIPTION	
2018CPT.01.12.20582.1		MAPS 65 - 67	
2018CPT.01.12.20582.1		MAP 74	

LOCATIONS: MAP 65 - SR 1206 - FROM SR 1139 TO DEAD END  
 MAP 66 - SR 1202 - FROM SR 1139 TO DEAD END  
 MAP 67 - SR 1204 - FROM SR 1142 TO SR 1202  
 MAP 74 - SR 1331 - FROM NC 125 TO DEAD END

TYPE OF WORK: THIN LIFT RESURFACING



NOT TO SCALE

PROJECT LENGTH

LENGTH OF MAP 65 = 0.24 MI.  
 LENGTH OF MAP 66 = 0.22 MI.  
 LENGTH OF MAP 67 = 0.09 MI.  
 LENGTH OF MAP 74 = 1.00 MI.

Prepared in the Office of:  
**DIVISION OF HIGHWAYS**

113 Airport Dr., Edenton NC, 27932

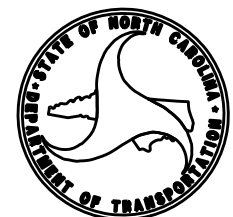
2012 STANDARD SPECIFICATIONS

LETTING DATE:

W.B. HOBBS, P.E.  
 DIVISION PROJECT MANAGER

C.E. SLACHTA  
 DIVISION PROPOSALS ENGINEER

DIVISION OF HIGHWAYS  
 STATE OF NORTH CAROLINA



09/08/09

CONTRACT: DA00382 WBS ELEMENT: 2018CPT.01.12.20582.1

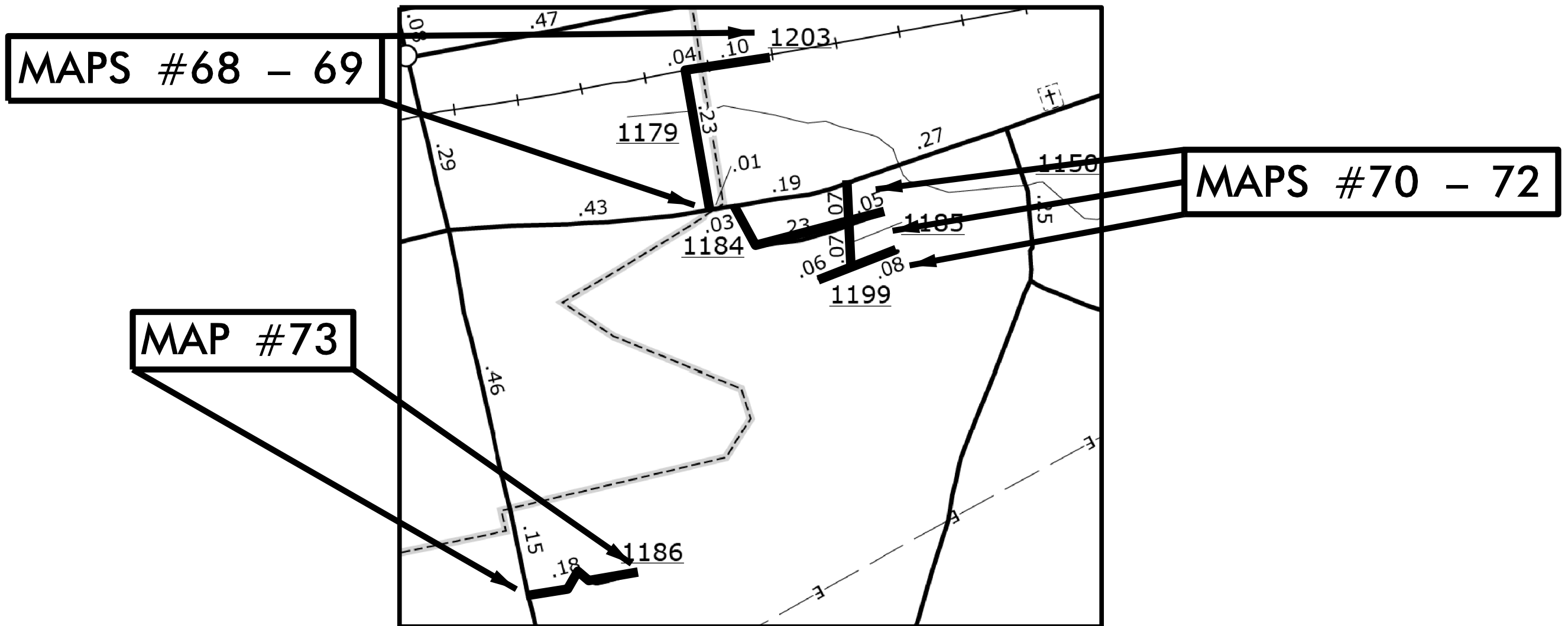
STATE OF NORTH CAROLINA  
DIVISION OF HIGHWAYS

**MARTIN COUNTY**

STATE	STATE PROJECT REFERENCE NO.	SHEET NO.	TOTAL SHEETS
N.C.	2018CPT.01.12.20582.1	12	
STATE PROJ. NO.	F.A. PROJ. NO.	DESCRIPTION	
2018CPT.01.12.20582.1		MAPS 68 - 73	

LOCATIONS: MAP 68 - SR 1179 - FROM SR 1159 TO SR 1203, MAP 69 - SR 1203 - FROM SR 1179 TO DEAD END  
 MAP 70 - SR 1184 - FROM SR 1159 TO DEAD END, MAP 71 - SR 1185 - FROM SR 1159 TO SR 1199  
 MAP 72 - SR 1199 - FROM DE TO DEAD END, MAP 73 - SR 1186 - FROM NC 903 TO DEAD END

TYPE OF WORK: THIN LIFT RESURFACING



NOT TO SCALE

PROJECT LENGTH

- LENGTH OF MAP 68 = 0.23 MI.
- LENGTH OF MAP 69 = 0.15 MI.
- LENGTH OF MAP 70 = 0.28 MI.
- LENGTH OF MAP 71 = 0.14 MI.
- LENGTH OF MAP 72 = 0.14 MI.
- LENGTH OF MAP 73 = 0.18 MI.

Prepared in the Office of:  
**DIVISION OF HIGHWAYS**

113 Airport Dr., Edenton NC, 27932

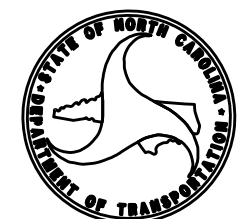
2012 STANDARD SPECIFICATIONS

LETTING DATE:

W.B. HOBBS, P.E.  
 DIVISION PROJECT MANAGER

C.E. SLACHTA  
 DIVISION PROPOSALS ENGINEER

DIVISION OF HIGHWAYS  
 STATE OF NORTH CAROLINA

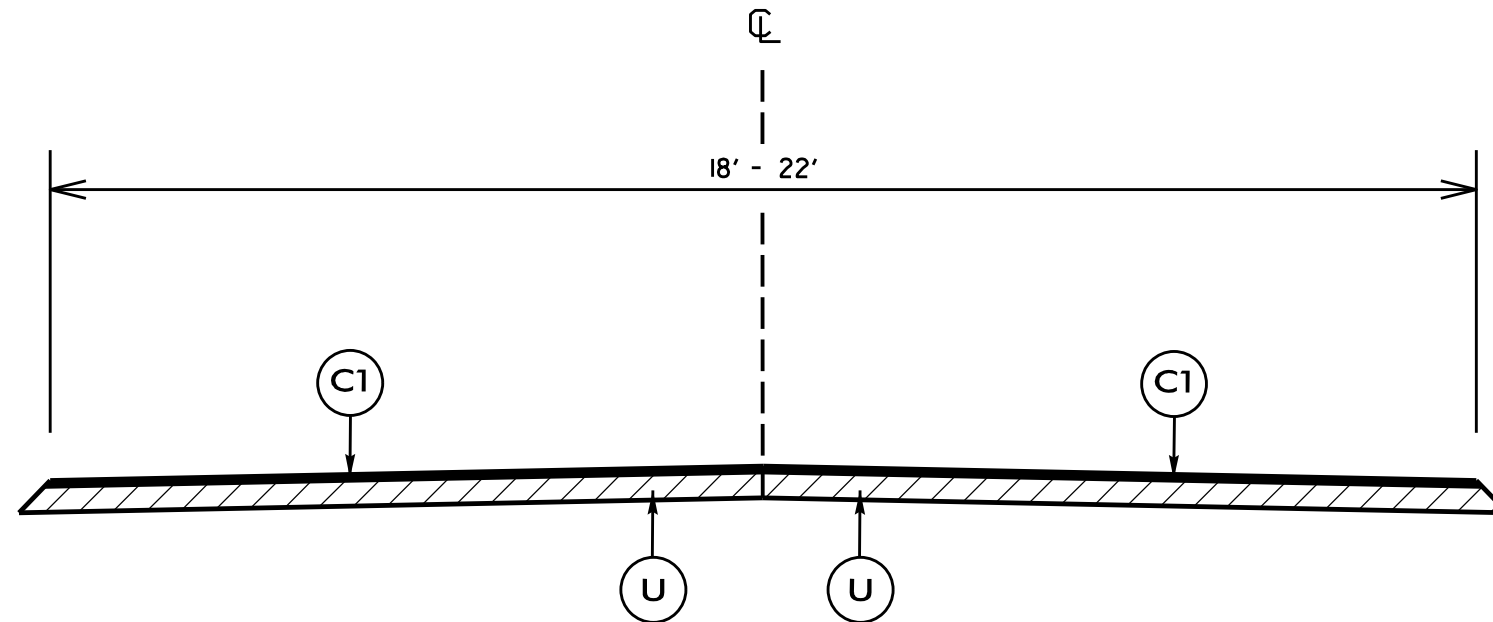


PAVEMENT SCHEDULE

C1	PROP. APPROX. 1.5" ASPHALT CONCRETE SURFACE COURSE, TYPE SF9.5A, AT AN AVERAGE RATE OF 168 LBS. PER SQ. YD.
U	EXISTING PAVEMENT

RESURFACING NOTES:

\*ALL PAVED S.R. ROADS TO BE RESURFACED TO THE ENDS OF THE RADII., OR AS DIRECTED BY THE ENGINEER.



TYPICAL SECTION NO. 1

USE WITH MAPS 1 - 19 & 34 - 36

NTS

\$\$\$\$\$  
SECTION  
\$\$\$\$\$

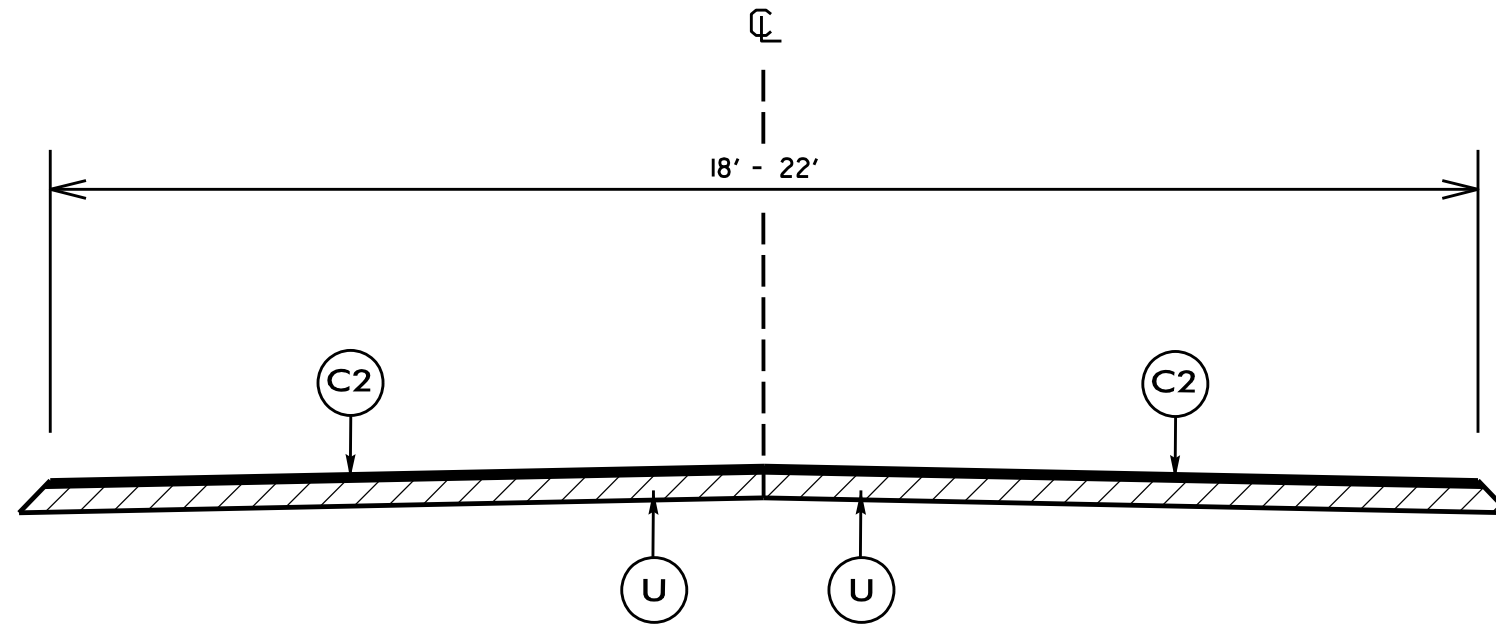
PAVEMENT SCHEDULE

PROJECT REFERENCE NO.	SHEET NO.
2018CPT.01.12.20212.1, ETC.	14

C2	PROP. APPROX. 0.75" ASPHALT CONCRETE SURFACE COURSE, TYPE S4.75A, AT AN AVERAGE RATE OF 85 LBS. PER SQ. YD.
U	EXISTING PAVEMENT

RESURFACING NOTES:

\*ALL PAVED S.R. ROADS TO BE RESURFACED TO THE ENDS OF THE RADII., OR AS DIRECTED BY THE ENGINEER.



**TYPICAL SECTION NO. 2**

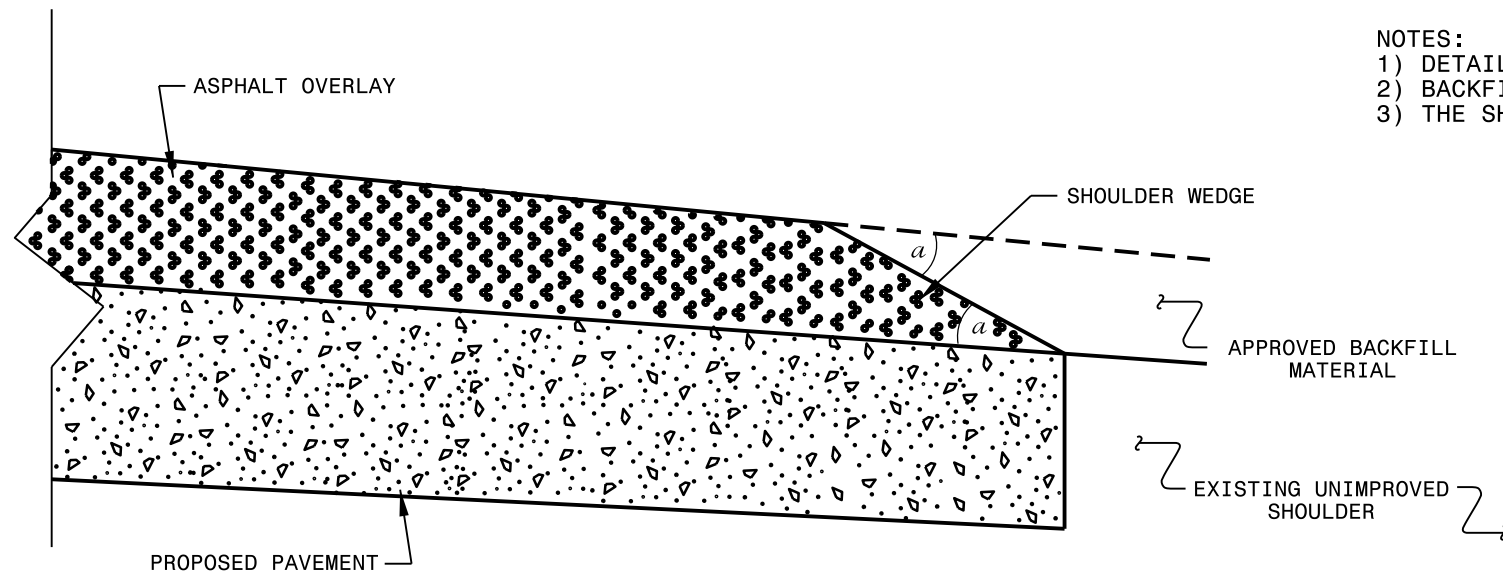
USE WITH MAPS 20 - 33 & 37 - 74

NTS

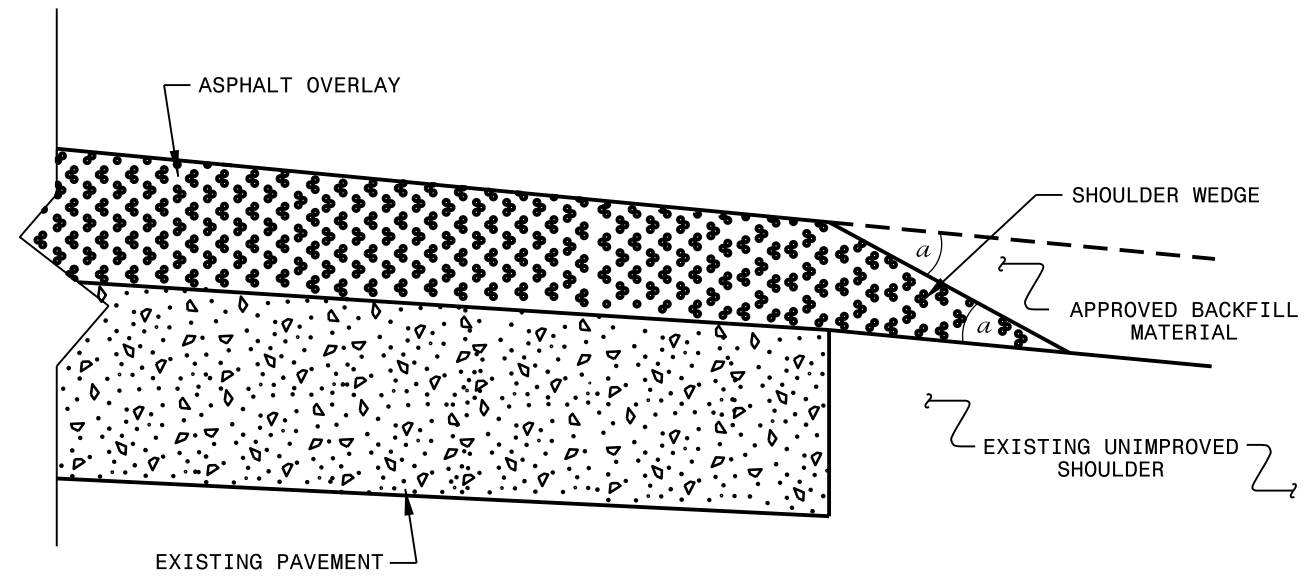
CUSTOMER'S COPY TO BE MAINTAINED IN ORIGINAL CONDITION



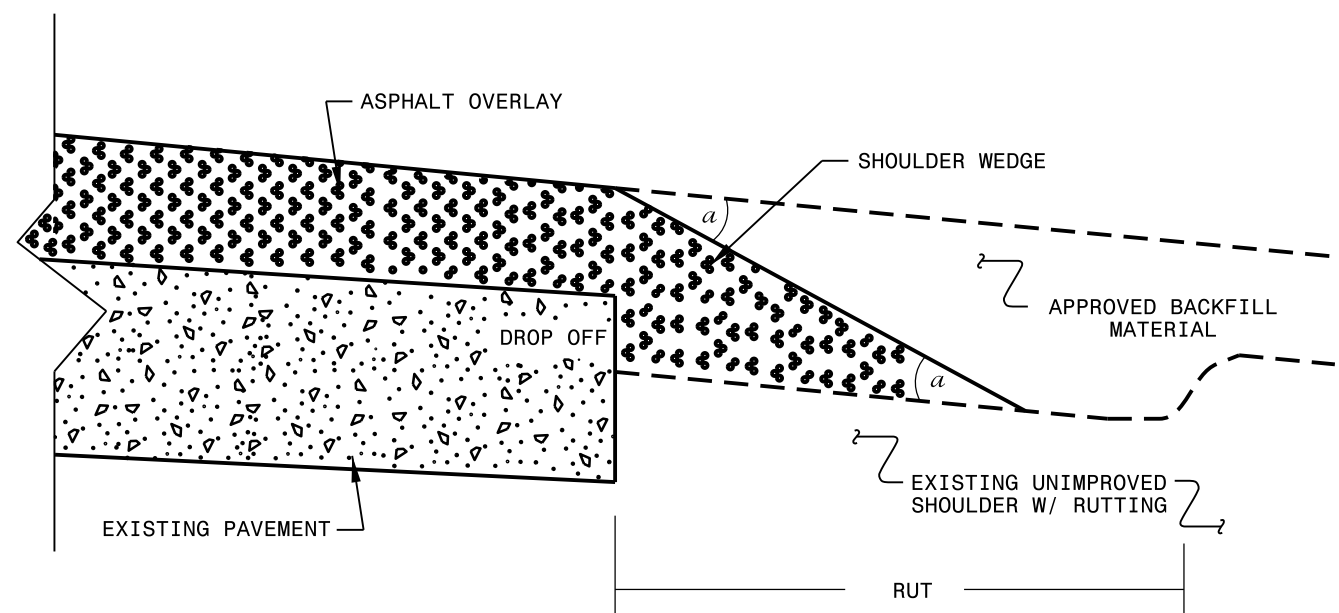
- NOTES:
- 1) DETAIL DOES NOT APPLY TO OGAFc AND ULTRA-THIN BONDED WEARING COURSE.
  - 2) BACKFILL SHOULDER WITH APPROVED MATERIAL.
  - 3) THE SHOULDER WEDGE DEVICE MAY BE DISENGAGED AT PAVED DRIVEWAYS AND SIDE STREETS.



**SHOULDER WEDGE DETAIL**  
(Resurfacing Projects w/ Widening or with Existing Paved Shoulder having no dropoffs)



**SHOULDER WEDGE DETAIL**  
(Resurfacing Projects w/ NO Widening)



**SHOULDER WEDGE DETAIL**  
(Resurfacing Adjacent to Rutted Shoulder)

- SHOULDER WEDGE ANGLE = 30°

CONTRACT STANDARDS AND DEVELOPMENT UNIT  
Office 919-707-6950 FAX 919-250-4119

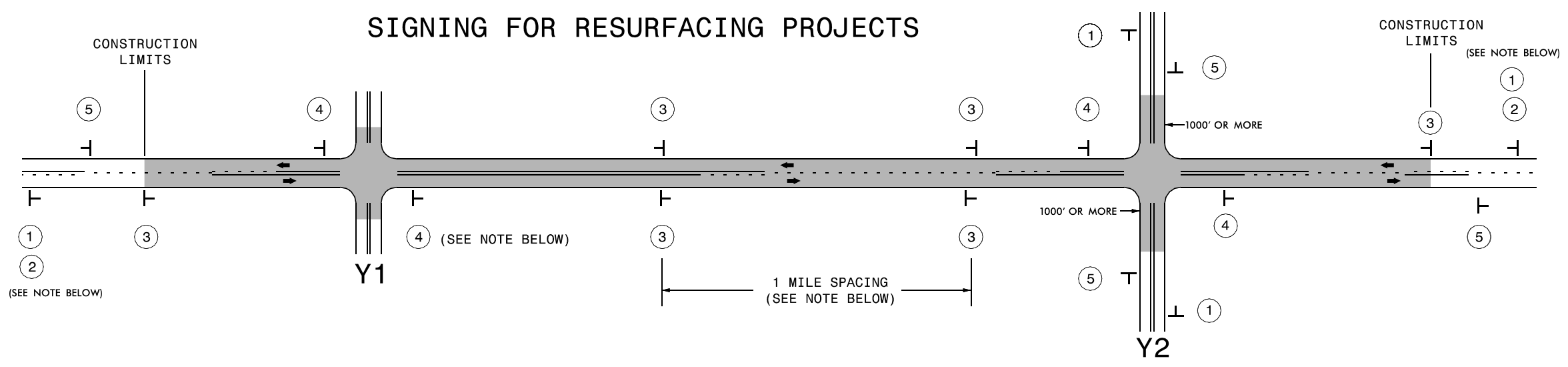
**SHOULDER WEDGE DETAILS**

ORIGINAL BY: T.SPELL DATE: 7-19-11  
 MODIFIED BY: DATE: 10/16/12  
 CHECKED BY: DATE:  
 FILE SPEC.: susr/details/stand/shoulderwedgedetail.dgn

SYSTEMS DESIGN USER NAME



# SIGNING FOR RESURFACING PROJECTS



LEGEND	
⊥	STATIONARY SIGN
←	DIRECTION OF TRAFFIC FLOW

## MAINLINE (-L-) SIGNING

## -Y- LINE SIGNING

SIGNING NOTES AND PLACEMENT PER DIRECTION	MAINLINE (-L-) SIGNING		-Y- LINE SIGNING	
	①	<p>PLACE 1000' PRIOR TO BEGINNING OF CONSTRUCTION LIMITS. ONLY USED ON -Y- LINES IF RESURFACING LIMITS EXTEND 1000' ALONG -Y- LINE.</p>	<p>NO REQUIRED STATIONARY SIGNING FOR THE FOLLOWING -Y- LINE CONDITIONS:</p> <ol style="list-style-type: none"> <li>1) LESS THAN 1000' OF RESURFACING ALONG -Y- LINE</li> <li>2) SUBDIVISION ROADS</li> <li>3) DEAD END ROADS</li> </ol> <p>WHEN PAVING/CONSTRUCTION ACTIVITIES PROCEED ACROSS AN UNSIGNED -Y- LINE, ADVANCE WARNING PORTABLE SIGNS SHALL BE USED ALONG THE -Y- LINE AS SHOWN BELOW. REMOVE UPON COMPLETION OF WORK.</p> <div style="display: flex; justify-content: space-around;"> <div style="text-align: center;">   <small>W20-1 48" X 48"</small> </div> <div style="text-align: center;">   <small>W20-7 A 48" X 48"</small> </div> </div> <p>PLACED 500' IN ADVANCE OF FLAGGER. PLACED 250' IN ADVANCE OF FLAGGER.</p>	
	②	<p>#2 SIGN ONLY USED WHEN RESURFACING LIMITS ARE 2 OR MORE MILES IN LENGTH. ROUND UP TO NEXT WHOLE NUMBER. (NO FRACTIONAL OR DECIMAL NUMBERS)</p>		
	③	<p>PLACE INITIALLY AT THE CONSTRUCTION LIMITS AND SPACED 1 MILE APART THEREAFTER. IF NO -Y- LINES EXIST, PLACE 2ND SET 1/2 MILE FROM THE CONSTRUCTION LIMITS AND THEN SPACE 1 MILE THEREAFTER.</p>		
④	<p>THESE ARE FOR -Y- LINES THAT ARE "THROUGH" ROADWAYS. DEAD END AND SUBDIVISION ROADS ARE NOT "THROUGH" ROADWAYS. INSTALL 500' +/- FROM EACH -Y- LINE APPROACH AS SHOWN ABOVE. FOR MULTIPLE -Y- LINES THAT ARE SEPARATED BY 0.25 MILES OR LESS, TREAT AS A SINGLE UNIT AND INSTALL WITHIN 500' OF EACH APPROACH. A MAXIMUM OF 2 SIGN SETS PER MILE. DO NOT INSTALL WHEN -Y- LINES ARE WITHIN 0.5 MILES FROM "END ROAD WORK" SIGN.</p>			
⑤	<p>PLACE 500' FOLLOWING THE END OF CONSTRUCTION LIMITS.</p>			

**RESURFACING  
ADVANCE WARNING SIGNS  
FOR  
RURAL AND SUBURBAN  
2 LANE ROADWAYS**

8/8/2013  
 S:\T\MU\WZTC\Resurfacing\2013Documents\New\_Pr ocedures\_05\_09\_2013\Resurfacing\_AdvWarn\_2Ln.dgn  
 User:frmgarr.ett